



KSA
ENGINEERS

Statement of Qualifications

Firm Profile



KSA Engineers, Inc. is an industry leader providing a broad range of consulting, management, engineering, planning, surveying, and construction services for more than 30 years. Founded in 1978, the firm has grown to over 150 employees in eight locations including:

- Amarillo
- Austin
- Longview
- Lufkin
- McKinney
- San Angelo
- Sugar Land
- Tyler

Today, KSA serves hundreds of clients throughout Texas, Louisiana, Arkansas, and Oklahoma and is a leader in preparing design solutions to clients in municipal, county, state, and federal governments, as well as river authorities, utility districts, water supply corporations, private industry, developers, and architects.

We are dedicated to making life better in communities. That's why we work everyday to improve the quality of life for our communities by making roads, bridges, buildings, water, air, and airports safer.

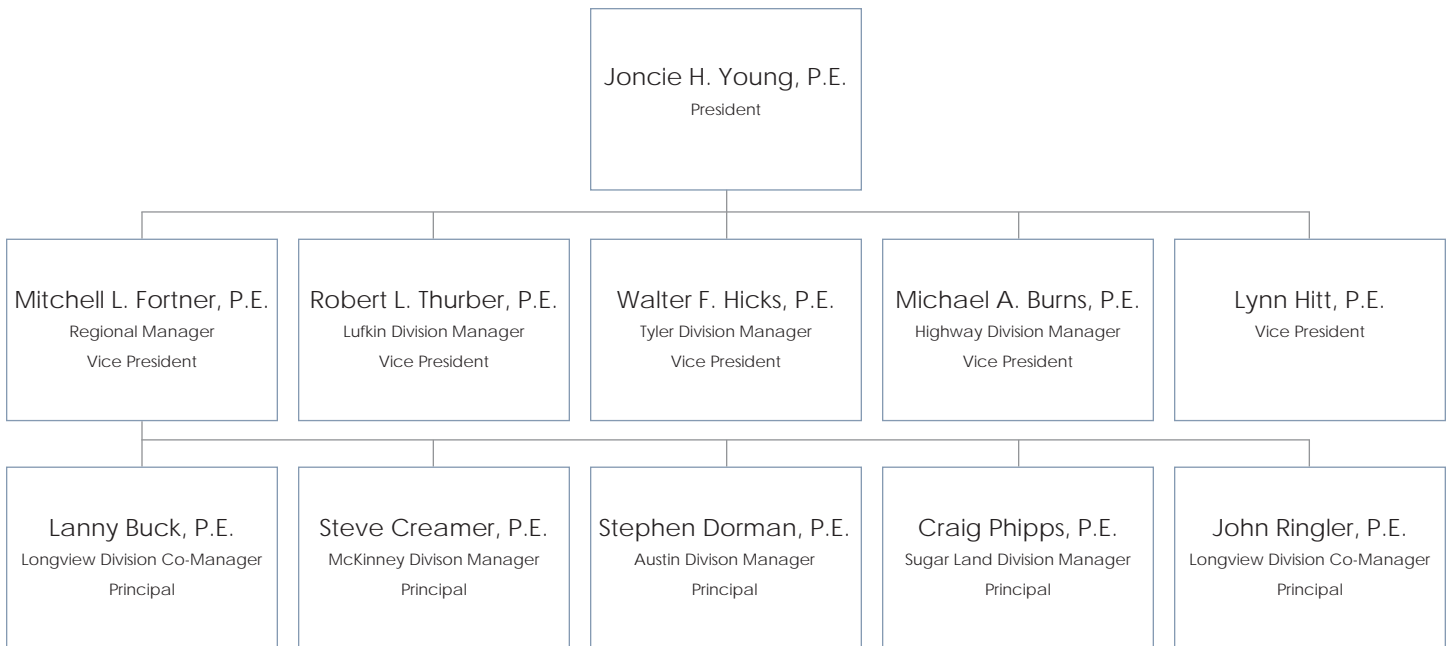
From conception to final completion, our knowledgeable teams oversee all aspects of each project we work on. This attention to detail has resulted in repeated client satisfaction and an excellent reputation throughout the region. It has also led to a high percentage of repeat clients. In fact, we have been serving many of the same clients throughout our entire 30 year history.

KSA continually provides unsurpassed quality and service. Due to our clients' continued trust in us, we were recently named a Top 200 firm in Zweig White's 2009 Hot Firm Contest, which recognizes the fastest growing engineering and architecture firms throughout the United States and Canada.

Corporate Leadership

KSA Engineers, Inc. has a staff of more than 150 engineers, surveyors, technicians, and administrative assistants in eight offices throughout Texas. Our staff values every client and works hard to provide quality project solutions.

The corporate leadership of KSA is comprised of a dynamic and experienced group of experts that are dedicated industry leaders. The following profiles will introduce you to the leaders of our firm.



Joncie Young, P.E.
President

Joncie H. Young, P.E.

Joncie graduated from the University of Texas with a BS in Civil Engineering and a MS in Environmental Health Engineering. He began his career as a consultant in 1974 and joined KSA Engineers in 1978. He was elected president of the firm in 1996 upon the retirement of company founder K.W. "Toby" Kindle. Joncie is a hands on manager and continues to be heavily involved in KSA's project work. His career has spanned 34 years with a focus on water, wastewater, and large municipal improvement projects. He has been the Project Manager for over \$200 million of new construction throughout his career.

"Our high percentage of repeat business is proof that we continually meet our client's expectations."

Joncie Young
President
KSA Engineers, Inc.



Mitchell L. Fortner, P.E.

Mitch graduated with honors from Texas A&M University in 1984 with a BS in Civil Engineering. Mitch joined KSA in 1984 as an EIT and has served over 20 years with the firm. Mitch served as a project manager for the Federal Aviation Administration's SW Region Airports Division from 1989 to 1991. His municipal consulting career includes a strong emphasis on airports, streets, drainage, and large water transmission mains. Mitch serves as a Vice President and KSA's Regional Manager with responsibility for the Austin, Longview, McKinney, and Sugar Land division; as well as our subsidiary Bloc Design Build, Inc.

Robert L. Thurber, P.E.

Robert (Bob), Vice President of KSA and Manager of KSA's Lufkin office, has been with the firm since 1978. He is one of the two original engineers hired by the firm. Bob graduated from the University of Arkansas and has over 39 years of experience in the private consulting business. Bob's general civil engineering experience includes a wide variety of projects that include water distribution, water treatment, wastewater collection and treatment, pump stations, water transmission mains, large trunk sewer mains, roadway and drainage, and airports. He has completed over 420 projects for KSA since its inception in 1978.

Walter F. Hicks, P.E.

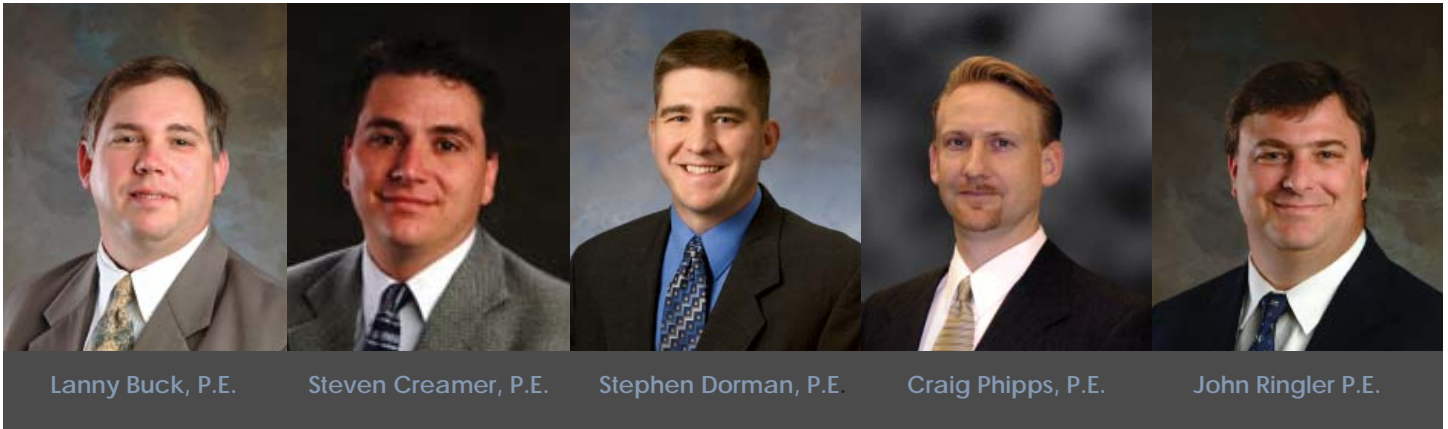
Walter (Tracy) is a Vice President and the Manager of KSA Engineers' Tyler office, doing business as Wisenbaker, Fix & Associates. Tracy received his Civil Engineering degree from Texas A&M University in 1980. Tracy's responsibilities with KSA emphasize municipal water, wastewater and solid waste system improvements. His experience includes facilities planning for wastewater treatment facilities; design of water supply, pumping, and distribution systems; wastewater treatment, pumping and collection systems; landfills; streets and drainage structures.

Michael A. Burns, P.E.

Michael graduated from Texas A&M University with a BS in Civil Engineering in 1981. Mike is a Vice President and the Manager of the Highway Division with KSA Engineers. Mike has 26 years of experience with 14 of those being with KSA Engineers. Mike has extensive civil engineering experience in the specialties of aviation, streets and thoroughfares, bridge design and inspection, downtown development, park development, sewer collection systems and water distribution systems.

Lynn Hitt, P.E.

Lynn graduated from Texas A&M University with a BS in Civil Engineering in 1978. Lynn, a Vice President in the Tyler Office of KSA Engineers, Inc. joined the firm in 1984. Lynn has extensive civil/environmental engineering experience related to municipal water and wastewater projects. As Project Manager, Lynn has been responsible for wastewater system master planning, wastewater treatment plant improvements, wastewater collection system and lift station projects, water system master planning, water treatment plant improvements, water wells, distribution system projects, raw water intakes and pumping systems, high service pump stations and elevated storage tanks.



Lanny Buck, P.E.

Lanny Buck, co-manager of the Longview division, has been with the firm since 1990. Lanny graduated from Texas Tech University with a BS in Civil Engineering in 1988 and with a Masters in Civil Engineering in 1989. Lanny has extensive civil/environmental engineering experience related to municipal and industrial projects, with emphasis on wastewater projects. He has been the Project Manager for numerous wastewater projects such as wastewater discharge permitting; infiltration/inflow studies and remediation, municipal and industrial wastewater treatment, wastewater collection system design, wastewater disinfection studies and sludge treatment and disposal.

Steve Creamer, P.E.

Steve Creamer, P.E. graduated from Louisiana Tech with a BS in Civil Engineering in 1995. Steve joined KSA Engineers, Inc., in 1999 and is now the Manager of the McKinney Office. Steve has experience with project scope development, cost estimating, preliminary and final design, construction administration, inspection, and other responsibilities associated with the aspects of civil and environmental engineering projects. Steve has extensive experience on airport projects and water supply and distribution system projects.

Stephen Dorman, P.E.

Stephen Dorman, P.E. joined KSA Engineers in 1994 after graduating from Texas A&M University with a Masters Degree in Civil Engineering. Over his 14 year career, he has provided project engineering and management on varied civil projects including an \$18 million water treatment plant expansion. Stephen was promoted in 2006 from Project Manager in our Lufkin Office to Manager of the Austin Office. Stephen's expertise is primarily focused on treatment plant design, having designed a combined peak water/wastewater plant capacity of over 75 MGD.

Craig Phipps, P.E.

Craig Phipps, the Manager of the Sugar Land office for KSA Engineers, has been with the firm since 1992. Craig graduated with honors from Texas A&M University with a BS Degree in Civil Engineering. Craig's primary focus is on design and construction of public works projects for municipalities. Craig has gained valuable design and construction management skills working on a variety of projects including airports, water lines, sanitary sewer lines, drainage improvements, street reconstruction and new construction, and feasibility studies. Typical projects include the design and construction of a \$6 million sanitary sewer collection system, the design and construction of a \$1.5 million five-lane city street extension and an \$18 million airport General Aviation Complex.

John Ringler, P.E.

John Ringler, P. E. graduated from Texas Tech University with a BS in Civil Engineering in 1991. John joined KSA Engineers as a Project Manager in 1997 and is now co-manager of KSA's Longview Division. John specializes in the design and construction, or expansion of water treatment plants and raw water intake systems. He has designed entire water distribution systems and provided numerous hydraulic analyses and renovations for existing systems. John also has broad experience in the permitting, design, and construction of wastewater treatment and collection systems, including several solid waste landfills.

KSA prepares design solutions for a variety of complex markets offering quality services to our clients. We deliver services to municipal, county, state, and federal government clients, as well as utility districts, water supply corporations, private industry, developers, and architects.



Airport Development

KSA specializes in the planning and design standards of airport facilities and uses knowledge of state and federal grant procedures to ensure that the project meets operational performance and physical requirements.

Drainage Improvement

Experience with major drainage projects, coupled with the latest computer technology enables KSA to design and implement innovative drainage solutions. Our knowledge of hydrology and hydraulics modeling programs allows us to provide sites that are sensitive to low impact and sustainable development as well as functional and comfortable for human use.

Electrical Controls & Power Distribution

KSA provides electrical engineering services to meet municipal and industrial customer needs for their water treatment, wastewater treatment, and aviation facilities.

Environmental Protection

KSA is considered a leader in the solid waste management industry. We stay current with regulatory policy and pending changes in order to provide our clients with the best possible service. Our staff prepares air emissions applications for submission to the Texas Commission on Environmental Quality and designs associated emissions control systems.

Industrial Site Development

KSA excels in providing planning and design services for the development of industrial or commercial buildings and building sites. These services include permitting, surveying, site grading, utility design, parking facilities and building layout.

Landscape Architecture

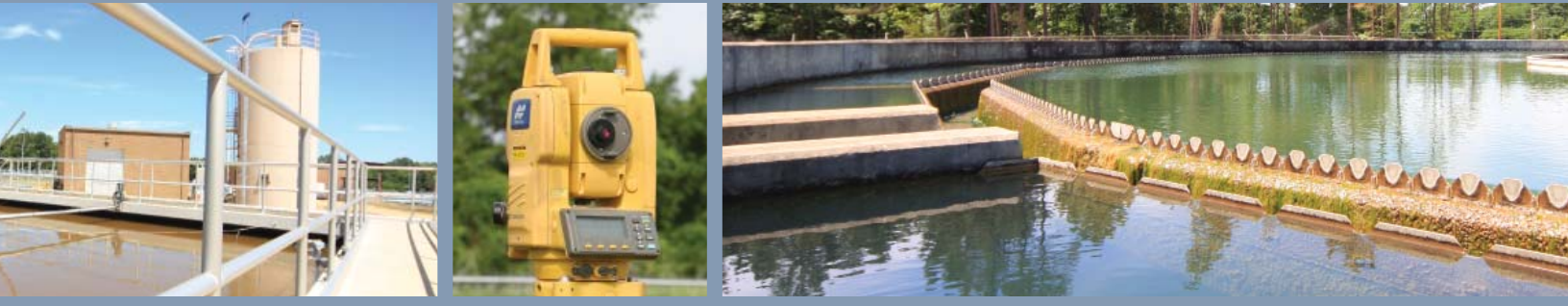
KSA offers landscape architecture services including such specialties as streetscape design, entryway design, general grading & drainage plans, parking lot design, planting and irrigation plans, and park planning services.

Mechanical, Electrical, & Plumbing

KSA's staff includes mechanical and electrical engineers who have extensive experience with a wide range of mechanical, electrical, and plumbing design projects.

Recreational Sites

KSA combines engineering, planning and design services with creativity to provide long-term quality assurance of park projects such as playgrounds, soccer fields, and baseball complexes. Public involvement is welcomed and encouraged by KSA project managers.



Alternative Project Delivery

KSA is able to provide a turn-key project from concept through completion with a single contract through strategic partnerships with qualified contractors and our subsidiary Bloc Design-Build, LLC. We have completed a variety of projects including large water transmission projects, landfills, bridges, and the demolition of elevated storage tanks through this innovative contracting method.

Renewable Energy & Conservation

KSA's subsidiary company Renewable Energy Solutions designs and installs innovative renewable energy projects such as solar PV arrays, conducts energy audits, and consults in the area of energy conservation. In addition, KSA's staff includes registered engineers who have achieved LEED AP certification and we consult in the area of LEED design for mechanical, electrical, and civil design projects.

SCADA Systems

Our subsidiary Bloc Design-Build, LLC provides design, installation, troubleshooting, and training for the sophisticated control systems used in the water and wastewater industry.

Streets

KSA has extensive experience in street improvement and repair projects and works with government and municipal customers to provide solid engineering solutions.

Surveying

KSA utilizes the latest technological advancements to provide accuracy and ensure that the design is in tune with the environmental and topographical conditions of the communities we serve. Our GPS instruments benefit our clients by providing a more cost effective and less time consuming design.

Transportation

KSA's Highway Division has over 40 years of combined TxDOT experience and draws upon extensive knowledge of federal and state agency procedures and project administrative requirements to produce successful paving and drainage projects.

Water & Wastewater Collection & Treatment

KSA serves both public and private sector clients in the areas of water and wastewater treatment, transmission and distribution systems. We specialize in the modification of existing water treatment plants to meet evolving national and state treatment standards. Our scope of services includes everything from treatability studies to construction contract administration.

KSA has experience with over 10,000 projects in the areas of streets, drainage, airports, water supply, treatment, and distribution, as well as wastewater collection, treatment, and permitting. Using a specialized team approach we work diligently with our clients from concept through construction administration to final completion.



Airport

- Amarillo International Airport
- East Texas Regional Airport
- Mesquite Metro Airport
- North Texas Regional Airport
- Rick Husband Amarillo International Airport
- San Angelo Regional Airport
- Sugar Land Regional Airport
- Terrell Municipal Airport Improvements
- Texas A&M University Airport Runway Rehabilitation
- Tyler Pounds Regional Airport

Recreational Sites

- City of Longview - Grace Creek Trail Project
- City of Longview - Hinsley Park
- City of Longview - McWhorter Park
- City of Longview - Spring Hill Park
- City of Longview - Timpson Park
- City of Marshall - Airport Park Improvements
- City of Rusk - Jim Hogg Park Revitalization

Street & Drainage

- City of Grand Prairie - Mayfield Road Improvements
- City of Heath - Design and Plans for White Road Extension
- City of Kilgore - Chandler Street Reconstruction
- City of Kilgore - Downtown Sidewalk Reconstruction
- City of Longview - Beaumont Street
- City of Longview - Tyler Street Reconstruction
- City of Lufkin - Downtown Street and Utilities Improvements
- City of Terrell - Colquitt Road Improvements
- City of Tyler - Commerce Street
- Town of Fairview - Stacey Road Improvements

Water Treatment Plant

- Lake Bob Sandlin Water Treatment Plant - Pittsburg, TX
- Lake O' the Pines Water Treatment Plant & High Service Pump Station - Longview, Texas
- Lake Palestine Water Treatment Plant - Tyler, Texas
- Northeast Texas Municipal Water District - Lake O' the Pines Southside Water Supply System
- Surface Water Treatment Plant Disinfection Modifications - City of Groesbeck
- Water Treatment Plant Improvements - City of Marlin

Wastewater Treatment Plant

- City of Buffalo - Wastewater Collection Systems Improvements
- City of Clute - Sanitary Sewer Improvements
- City of Huntsville - Robinson Creek Wastewater Treatment Plant
- City of Lindale - Corridor Sewer System Expansion
- City of Mexia - Wastewater Treatment Facility
- City of Mount Pleasant - MGD WTP, Raw Water Pump Station & Modifications at Existing Facilities
- City of Tyler - Lake Palestine Raw Water Pump Station
- Robinson Creek Wastewater Treatment Plant - Huntsville, Texas
- Wastewater Treatment Plant - Longview, Texas
- Wastewater Treatment Plant - Pittsburg, Texas
- Westside Wastewater Treatment Plant Improvements - Tyler, Texas

Water & Wastewater Planning

- City of Longview Water Distribution System Update
- City of Mount Pleasant Wastewater System Study
- City of Mount Pleasant Water System Analysis
- City of Tyler Water Distribution System Analysis



Contact Information

Amarillo

10801 Airport Blvd.
Amarillo, TX 79111
806.335.1600

Austin

4833 Spicewood Spring Rd. Ste 204
Austin, TX 78759
512.342.6868

Longview

140 E. Tyler Street, Suite 600
Longview, TX 75601
P 903.236.7700

Lufkin

107 W. Lufkin Ave, Ste 200
Lufkin, TX 75904
936.637.6061

McKinney

8875 Synergy Drive
McKinney, TX 75070
972.542.2995

San Angelo

8618 Terminal Circle, Suite 104
San Angelo, TX 76904
325.812.8430

Sugar Land

224 Terminal Lane
Sugar Land, TX 77498
281.494.3252

Tyler

6781 Oak Hill Blvd.
Tyler, TX 75703
903.581.8141

Toll Free 877.572.3647
info@ksaeng.com
www.ksaeng.com