



KSA | Aviation
ENGINEERS | Services

Statement of Qualifications
Airport Engineering & Planning

Firm Profile

KSA Engineers, Inc. is an industry leader providing a broad range of consulting, management, engineering, planning, surveying, and construction services for more than 30 years. Founded in 1978, the firm has grown to over 150 employees in eight locations including:

- Amarillo
- Austin
- Longview
- Lufkin
- McKinney
- San Angelo
- Sugar Land
- Tyler

Today, KSA serves hundreds of clients throughout Texas, Louisiana, Arkansas, and Oklahoma and is a leader in preparing design solutions to clients in municipal, county, state, and federal governments, as well as river authorities, utility districts, water supply corporations, private industry, developers, and architects.

We are dedicated to making life better in communities. That's why we work everyday to improve the quality of life for our communities by making roads, bridges, buildings, water, air, and airports safer.

From conception to final completion, our knowledgeable teams oversee all aspects of each project we work on. This attention to detail has resulted in repeated client satisfaction and an excellent reputation throughout the region. It has also led to a high percentage of repeat clients. In fact, we have been serving many of the same clients throughout our entire 30 year history.

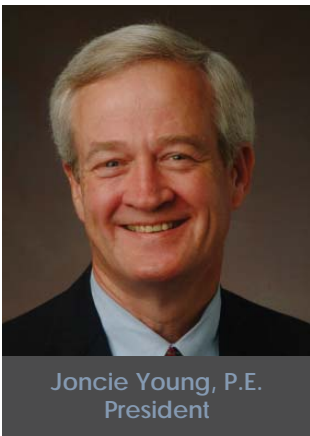
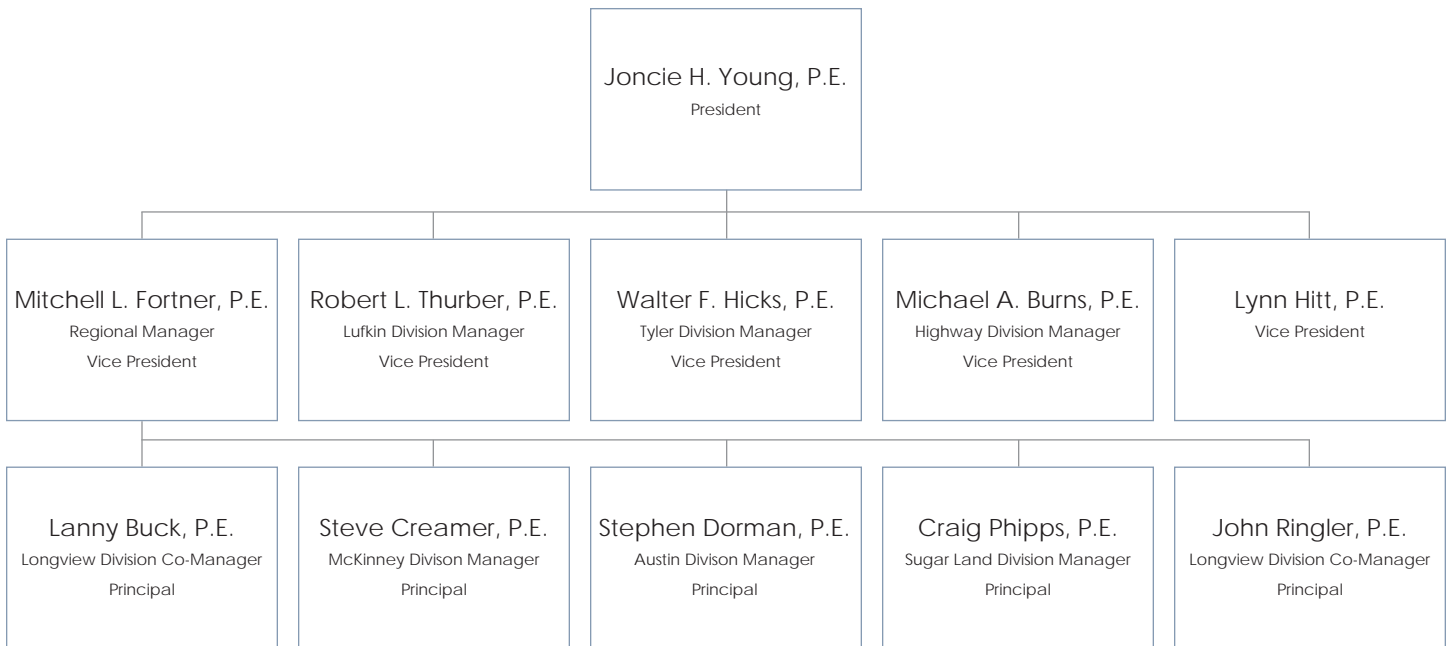
KSA continually provides unsurpassed quality and service. Due to our clients' continued trust in us, we were named a Top 200 firm in Zweig White's 2009 and 2010 Hot Firm Contests, which recognize the fastest growing engineering and architecture firms throughout the United States and Canada. In addition, KSA was recently named to the ENR 500, an annual list of the 500 largest design firms in the United States.



Corporate Leadership

KSA Engineers, Inc. has a staff of more than 150 engineers, surveyors, technicians, and administrative assistants in eight offices throughout Texas. Our staff values every client and works hard to provide quality project solutions.

The corporate leadership of KSA is comprised of a dynamic and experienced group of experts that are dedicated industry leaders. The following profiles will introduce you to the principals of our firm.



Joncie H. Young, P.E.

Joncie graduated from the University of Texas with a BS in Civil Engineering and a MS in Environmental Health Engineering. He began his career as a consultant in 1974 and joined KSA Engineers in 1978. He was elected president of the firm in 1996 upon the retirement of company founder K.W. "Toby" Kindle. Joncie is a hands on manager and continues to be heavily involved in KSA's project work. His career has spanned 34 years with a focus on water, wastewater, and large municipal improvement projects. He has been the Project Manager for over \$200 million of new construction throughout his career.

"Our high percentage of repeat business is proof that we continually meet our client's expectations."

Joncie Young, President KSA Engineers, Inc.



Mitchell L. Fortner, P.E. (Airport Team)

Mitch graduated with honors from Texas A&M University in 1984 with a BS in Civil Engineering. Mitch joined KSA in 1984 as an EIT and has served over 20 years with the firm. Mitch served as a project manager for the Federal Aviation Administration's SW Region Airports Division from 1989 to 1991. His municipal consulting career includes a strong emphasis on airports, streets, drainage, and large water transmission mains. Mitch serves as a Vice President and KSA's Regional Manager with responsibility for the Austin, Longview, McKinney, and Sugar Land division; as well as our subsidiary Bloc Design Build, Inc.

Robert L. Thurber, P.E. (Airport Team)

Robert (Bob), Vice President of KSA and Manager of KSA's Lufkin office, has been with the firm since 1978. He is one of the two original engineers hired by the firm. Bob graduated from the University of Arkansas and has over 39 years of experience in the private consulting business. Bob's general civil engineering experience includes a wide variety of projects that include water distribution, water treatment, wastewater collection and treatment, pump stations, water transmission mains, large trunk sewer mains, roadway and drainage, and airports. He has completed over 420 projects for KSA since its inception in 1978.

Walter F. Hicks, P.E.

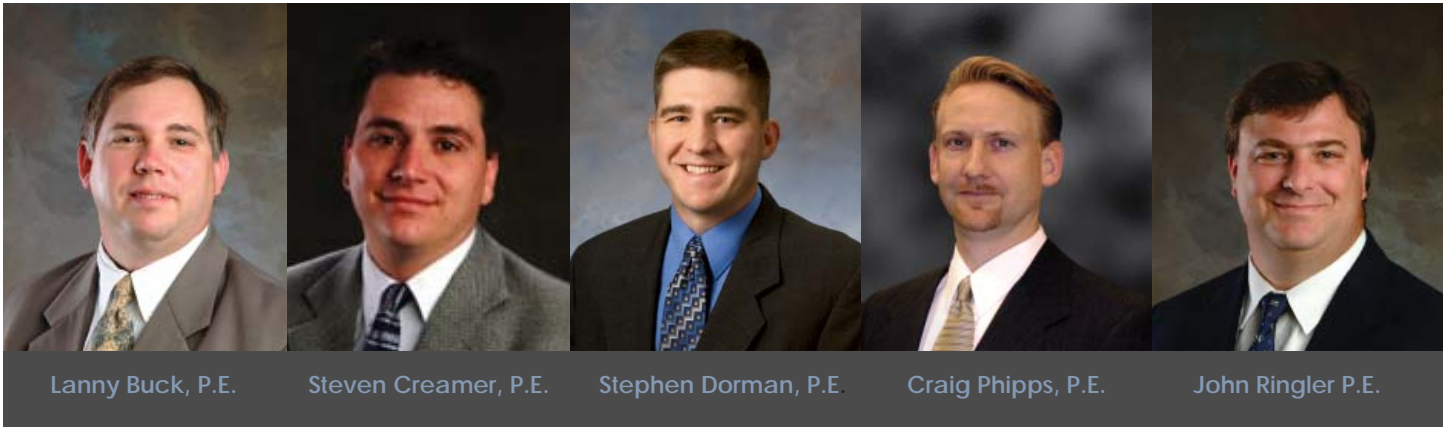
Walter (Tracy) is a Vice President and the Manager of KSA Engineers' Tyler office, doing business as Wisenbaker, Fix & Associates. Tracy received his Civil Engineering degree from Texas A&M University in 1980. Tracy's responsibilities with KSA emphasize municipal water, wastewater and solid waste system improvements. His experience includes facilities planning for wastewater treatment facilities; design of water supply, pumping, and distribution systems; wastewater treatment, pumping and collection systems; landfills; streets and drainage structures.

Michael A. Burns, P.E. (Airport Team)

Michael graduated from Texas A&M University with a BS in Civil Engineering in 1981. Mike is a Vice President and the Manager of the Highway Division with KSA Engineers. Mike has 26 years of experience with 14 of those being with KSA Engineers. Mike has extensive civil engineering experience in the specialties of aviation, streets and thoroughfares, bridge design and inspection, downtown development, park development, sewer collection systems and water distribution systems.

Lynn Hitt, P.E.

Lynn graduated from Texas A&M University with a BS in Civil Engineering in 1978. Lynn, a Vice President in the Tyler Office of KSA Engineers, Inc. joined the firm in 1984. Lynn has extensive civil/environmental engineering experience related to municipal water and wastewater projects. As Project Manager, Lynn has been responsible for wastewater system master planning, wastewater treatment plant improvements, wastewater collection system and lift station projects, water system master planning, water treatment plant improvements, water wells, distribution system projects, raw water intakes and pumping systems, high service pump stations and elevated storage tanks.



Lanny Buck, P.E.

Lanny Buck, Co-manager of the Longview division, has been with the firm since 1990. Lanny graduated from Texas Tech University with a BS in Civil Engineering in 1988 and with a Masters in Civil Engineering in 1989. Lanny has extensive civil/environmental engineering experience related to municipal and industrial projects, with emphasis on wastewater projects. He has been the Project Manager for numerous wastewater projects such as wastewater discharge permitting; infiltration/inflow studies and remediation, municipal and industrial wastewater treatment, wastewater collection system design, wastewater disinfection studies and sludge treatment and disposal.

Steve Creamer, P.E. (Airport Team)

Steve Creamer, P.E. graduated from Louisiana Tech with a BS in Civil Engineering in 1995. Steve joined KSA Engineers, Inc., in 1999 and is now the Manager of the McKinney Office. Steve has experience with project scope development, cost estimating, preliminary and final design, construction administration, inspection, and other responsibilities associated with the aspects of civil and environmental engineering projects. Steve has extensive experience on airport projects and water supply and distribution system projects.

Stephen Dorman, P.E.

Stephen Dorman, P.E. joined KSA Engineers in 1994 after graduating from Texas A&M University with a Masters Degree in Civil Engineering. Over his 14 year career, he has provided project engineering and management on varied civil projects including an \$18 million water treatment plant expansion. Stephen was promoted in 2006 from Project Manager in our Lufkin Office to Manager of the Austin Office. Stephen's expertise is primarily focused on treatment plant design, having designed a combined peak water/wastewater plant capacity of over 75 MGD.

Craig Phipps, P.E. (Airport Team)

Craig Phipps, the Manager of the Sugar Land office for KSA Engineers, has been with the firm since 1992. Craig graduated with honors from Texas A&M University with a BS Degree in Civil Engineering. Craig's primary focus is on design and construction of public works projects for municipalities. Craig has gained valuable design and construction management skills working on a variety of projects including airports, water lines, sanitary sewer lines, drainage improvements, street reconstruction and new construction, and feasibility studies. Typical projects include the design and construction of a \$6 million sanitary sewer collection system, the design and construction of a \$1.5 million five-lane city street extension and an \$18 million airport GA Complex.

John Ringler, P.E.

John Ringler, P. E. graduated from Texas Tech University with a BS in Civil Engineering in 1991. John joined KSA Engineers as a Project Manager in 1997 and is now co-manager of KSA's Longview Division. John specializes in the design and construction, or expansion of water treatment plants and raw water intake systems. He has designed entire water distribution systems and provided numerous hydraulic analyses and renovations for existing systems. John also has broad experience in the permitting, design, and construction of wastewater treatment and collection systems, including several solid waste landfills.

Employee Airport Experience

YEARS OF EXPERIENCE
GA
RELIEVER
PART 139

LONGVIEW				
Mitchell L. Fortner, P.E.	23	●	●	●
Michael A. Burns, P.E.	20	●	●	●
Leslie Shaw, P.E.	8	●	●	●
David Huffstutler, EIT	3	●	●	●
CAD Technicians				
Joshua Meyers	3	●	●	●
Administrative Assistants				
Joni Bailey	10	●	●	●
RPR's				
Ray Hicks	7	●	●	
SUGAR LAND/AUSTIN/SAN ANGELO				
Craig Phipps, P.E.	19	●	●	●
Stephen Dorman, P.E.	10	●		
David Alexander, P.E.	5	●	●	●
Kent Wu, P.E.	3	●	●	
Jennifer Black, P.E.	5	●	●	
Grayson Cox, EIT	3	●	●	
Thomas Sikora, EIT	3	●	●	
Senior Design Technician				
Bill Addison	10	●	●	●
CAD Technicians				
Curt Moreno	9	●	●	
Alicia Jones	5	●	●	
John Consolacion	6	●		
Patrick Marcum	4	●		
James McCoy	5	●		
Maria Briones	2	●		
Maria Macias	2	●		
Administrative Assistants				
Deborah Rupp	13	●		
Tiffany Arias	8	●		
RPR's				
Hugo Zuniga	5	●	●	
Bill Maines	4	●		

YEARS OF EXPERIENCE
GA
RELIEVER
PART 139

McKINNEY				
Steve Creamer, P.E.	12	●	●	●
Chris Whitfield, P.E.	14	●	●	●
Bob Jutton, P.E.	35	●	●	●
Jonathon Farmer, P.E.	5	●	●	●
Elliot Neph, EIT	4	●	●	●
CAD Technicians				
Jeremy Bostock	15	●	●	●
Kim Webb	5	●	●	●
Mark Breese	1	●	●	●
Casey Raymond	2	●	●	●
RPR				
Ronnie Higgins	11	●	●	●
Dennis Blake	24	●	●	●
Steve Penner	19	●		●
Leppert	4	●		●
Administrative Assistants				
Lori English	1	●	●	●
Casey Paul	3	●	●	●
LUFKIN				
Robert L. Thurber, P.E.	35	●	●	●
Jimmy Thompson, P.E.	3	●		
CAD Technicians				
Shane Wiggins	5	●		
Antonio Augiliar	3	●		
Administrative Assistant				
Nikki Hughes	8	●		
AMARILLO				
Clayton Scales, P.E.	8	●	●	●
CAD Technicians				
Janet Pennington	4		●	●

Airport Services

In order to best serve our clients, KSA offers a broad range of airport services. KSA specializes in the planning and design standards of airport facilities and uses knowledge of state and federal grant procedures to ensure that the project meets operational performance and physical requirements.



Access Road and Site Improvements



Airfield Lighting & Signage



Airport Planning



Apron Construction & Rehabilitation



Drainage & Stormwater



Fencing & Improvements



Runway Construction & Rehabilitation



Taxiway Construction & Rehabilitation



Visual & Navigational Aides

Airport Experience

KSA serves over 70 airports in Texas. Using a specialized team approach we work diligently with our clients from concept through construction administration to final completion. Examples of our projects are listed below.



Angelina County Airport - SPCC
Cherokee County - 2003 Airport Improvements
City of Denton - Denton Municipal Airport Runway & Taxiway Extension
City of Gladewater - Terminal Apron & Pavement Rehabilitation
City of Idabel - Airport Pavement Rehabilitation & Drainage
City of Mount Pleasant - Airport Layout Plan
City of Mount Pleasant - Mt. Pleasant Regional Airport 1,000 Foot Runway & Parallel Taxiway Extension
City of Mount Pleasant - Pavement Design for New T-Hangar No. 4
City of Nacogdoches - Runway 18-36 MIRL Replacement
City of Sugar Land - East GA Complex - Phase 1
City of Terrell - TW C Extension & Parking Apron at Terrell Municipal Airport
City of Tyler - Runway 4-22 & Taxiway F Rejuvenation
City of Tyler - Year 2005 Lighting Project
City of Tyler - 2007 Runway 13 RSA Grading Improvements
Coffman & Associates - East Texas Regional Airport Master Plan
Collin County Regional Airport - Taxiway Overlay
Collin County Regional Airport - TWY F, Access Road
Collin County Regional Airport - Environmental Assessment for Replacement Runway
Collin County Regional Airport - Runway Overlay
Denton Municipal Airport - Parallel Taxiway Realignment and Apron Construction
East Texas Regional Airport - Aviation Apron Improvements
East Texas Regional Airport - 2006 Runway & Taxiway Pavement Rehabilitation
Edwards Associates Architects & Planners, A.I.A. - Citgo Hangar Civil/Sitework
Grayson County Airport - 2007, 2008 & 2009 Improvements
Grayson County Airport - New Hangar Access Taxiway
Gregg County - East Texas Regional Airport Year 2007 Perimeter Road
Hardin County - Airport Improvements
Lancaster Regional Airport - 2007 Airport Improvements
Limestone County Airport - 2006 Airport Improvements - Construction Phase
Mesquite Metro Airport - Airport Ramp Lighting
The LPA Group Incorporated - Airport Master Plan
Tyler Pounds Regional Airport - Taxiway Lighting System Improvements
Tyler Pounds Regional Airport - Apron Rehabilitation
Wood County Airport - New Parallel Taxiway & Pavement Rehab

Additional Services

KSA prepares design solutions for a variety of complex markets offering quality services to our clients. We deliver services to municipal, county, state, and federal government clients, as well as utility districts, water supply corporations, private industry, developers, and architects.



Airport Development

KSA specializes in the planning and design standards of airport facilities and uses knowledge of state and federal grant procedures to ensure that the project meets operational performance and physical requirements.

Drainage Improvement

Experience with major drainage projects, coupled with the latest computer technology enables KSA to design and implement innovative drainage solutions. Our knowledge of hydrology and hydraulics modeling programs allows us to provide sites that are sensitive to low impact and sustainable development as well as functional and comfortable for human use.

Electrical Controls & Power Distribution

KSA provides electrical engineering services to meet municipal and industrial customer needs for their water treatment, wastewater treatment, and aviation facilities.

Environmental Protection

KSA is considered a leader in the solid waste management industry. We stay current with regulatory policy and pending changes in order to provide our clients with the best possible service. Our staff prepares air emissions applications for submission to the Texas Commission on Environmental Quality and designs associated emissions control systems.

Industrial Site Development

KSA excels in providing planning and design services for the development of industrial or commercial buildings and building sites. These services include permitting, surveying, site grading, utility design, parking facilities and building layout.

Landscape Architecture

KSA offers landscape architecture services including such specialties as streetscape design, entryway design, general grading & drainage plans, parking lot design, planting and irrigation plans, and park planning services.

Mechanical, Electrical, & Plumbing

KSA's staff includes mechanical and electrical engineers who have extensive experience with a wide range of mechanical, electrical, and plumbing design projects.

Recreational Sites

KSA combines engineering, planning and design services with creativity to provide long-term quality assurance of park projects such as playgrounds, soccer fields, and baseball complexes. Public involvement is welcomed and encouraged by KSA project managers.

Additional Services



Alternative Project Delivery

KSA is able to provide a turn-key project from concept through completion with a single contract through strategic partnerships with qualified contractors and our subsidiary Bloc Design-Build, LLC. We have completed a variety of projects including large water transmission projects, landfills, bridges, and the demolition of elevated storage tanks through this innovative contracting method.

Renewable Energy & Conservation

KSA's subsidiary company Renewable Energy Solutions designs and installs innovative renewable energy projects such as solar PV arrays, conducts energy audits, and consults in the area of energy conservation. In addition, KSA's staff includes registered engineers who have achieved LEED AP certification and we consult in the area of LEED design for mechanical, electrical, and civil design projects.

SCADA Systems

Our subsidiary Bloc Design-Build, LLC provides design, installation, troubleshooting, and training for the sophisticated control systems used in the water and wastewater industry.

Streets

KSA has extensive experience in street improvement and repair projects and works with government and municipal customers to provide solid engineering solutions.

Surveying

KSA utilizes the latest technological advancements to provide accuracy and ensure that the design is in tune with the environmental and topographical conditions of the communities we serve. Our GPS instruments benefit our clients by providing a more cost effective and less time consuming design.

Transportation

KSA's Highway Division has over 40 years of combined TxDOT experience and draws upon extensive knowledge of federal and state agency procedures and project administrative requirements to produce successful paving and drainage projects.

Water & Wastewater Collection & Treatment

KSA serves both public and private sector clients in the areas of water and wastewater treatment, transmission and distribution systems. We specialize in the modification of existing water treatment plants to meet evolving national and state treatment standards. Our scope of services includes everything from treatability studies to construction contract administration.

Contact Information

Amarillo

600 S. Tyler St., Suite 1403
Amarillo, TX 79101
806.335.1600

Austin

4833 Spicewood Spring Rd. Suite 204
Austin, TX 78759
512.342.6868

Longview

140 E. Tyler St., Suite 600
Longview, TX 75601
P 903.236.7700

Lufkin

107 W. Lufkin Ave, Suite 200
Lufkin, TX 75904
936.637.6061

McKinney

8875 Synergy Dr.
McKinney, TX 75070
972.542.2995

San Angelo

5301 Knickerbocker Rd.
San Angelo, TX 76904
325.947.1555

Sugar Land

816 Park Two Drive
Sugar Land, TX 77478
281.494.3252

Tyler

6781 Oak Hill Blvd.
Tyler, TX 75703
903.581.8141

Toll Free 877.572.3647
info@ksaeng.com
www.ksaeng.com

